

## Contents

Title	Author	Page
<b>Articles</b>		
24Acres Community Orchard	David Thomas	12
A New Finish for a Terracotta or Brick Floor	Max Campbell	4
Burwell Creative Community Shop 1 <sup>st</sup> Birthday	Burwell Print	20
Buckingham Palace Visit	Hilary Marsh	15
Great Crested Newts	Nick Acklam	14
Prior Fen Chapel		18
The Hythe	Peter Webb	9
<b>Anglesey Abbey</b>	Meghan Curteis	14
<b>Bottisham and Burwell Photographic Club</b>	Eliot Needham	15
<b>Burwell Museum</b>	Sarah James	22
<b>Burwell and Reach Car Scheme</b>	Pam King	3
<b>Bus Timetable</b>		35
<b>CentrePeace</b>		3
<b>Church</b>		
Church Services and Events		24
Letter from the Vicarage	Eleanor Williams	23
Reach Church Building Update	Pat Chalmers	23
<b>Contact Information</b>		36
<b>Diary Dates</b>		34
<b>Events Team</b>	Debbie Quilter	14
<b>Food Focus</b>	Catherine Gibson	19
<b>Getting to Know You</b>	Karen Carpenter	7
<b>Nature in Reach</b>	Cath Tayleur	10
<b>Parish Council</b>		
Know your District Councillors		25
Know Your Parish Council		24
Meeting Minutes		26
Neighbourhood Plan		33
<b>Reach Community Cafe</b>	Claire and Helen	8
<b>Rosanna's Ramblings</b>	Rosanna Moseley Gore	5
<b>Sport and Recreation</b>		
Cricket Reports	Ross Clark and Rob Steed	9 and 24
Reach Riders	Sue Cameron	6
<b>Tales from a Reach Garden</b>	Danuta Gibson	17
<b>Then and Now</b>	Chris Patterson	36
<b>Village Hall Committee</b>	Sue Elliot	6
<b>Village Update</b>	Alex de Giorgio-Miller	3
<b>Wicken Fen</b>	Julia Hammond	13

---

## From the Editor

---

Quite an eventful couple of months weatherwise. Whilst I was away in Majorca enjoying temperatures of 34 degrees it seems you guys travelled nowhere and were experiencing temperatures of 40 degrees – quite incredible! Danuta's article in this issue is especially interesting, showing the implications of such intense heat on our growers.



As you might expect, this edition of the magazine has suggestions on how to keep the kids amused, from Anglesey Abbey, Burwell Museum and Wicken Fen

And there is cricket to be played! The Reach Cricket Team is looking to be more inclusive, attracting villagers who haven't played for the village (or anyone!) before – and also encouraging the ladies of the village to play – see page 24.

Interesting input from what is now GOBA regarding signage on the Hythe – on page 9.

And we all need to be getting down to the 24Acres Orchard where there is fresh fruit to be had – on page 12.

And if anyone knows the whereabouts of any Great Crested Newts, please let Nick know – on page 14.

Lovely to receive an article from Hilary Marsh telling us all about her visit to Buckingham Palace with Brian – on page 15.

Quite a bit of diversity in this issue!

**David Parr**



---

## About the Magazine

---

The purpose of *Within Reach* is to serve the whole village by circulating information and interesting articles free to every household. Additional copies are available at a charge of £2.50. Issues are published bi-monthly covering the months of Feb/Mar, Apr/May, June/July, Aug/Sept, Oct/Nov and Dec/Jan.

Copies of *Within Reach* magazine and its predecessor *Out of Reach* can be found on the village website [www.reach-village.co.uk](http://www.reach-village.co.uk). This magazine (which is fully funded from advertising) is printed by Burwell Print Centre, an excellent social enterprise which trains and supports adults with learning disabilities and provides high quality design and print capabilities.

---

## The Team

---

<b>Editor</b>	David Parr
<b>Distribution</b>	Freda Lloyd, Claire Halpin-McDonald and Grahame Radford
<b>Photographer</b>	Rosanna Moseley Gore
<b>24Acres</b>	David Thomas
<b>Anglesey Abbey</b>	Meghan Curteis
<b>Church</b>	Eleanor Williams
<b>Cookery</b>	Catherine Gibson
<b>Cricket</b>	Ross Clark
<b>Events Team</b>	Debbie Quilter
<b>Gardening</b>	Danuta Gibson
<b>Getting to Know You</b>	Karen Carpenter
<b>Neighbourhood Watch</b>	Kevin Evans
<b>Reach Riders Group</b>	Sue Cameron
<b>Rosanna's Ramblings</b>	Rosanna Moseley Gore
<b>Snakehall Farm</b>	Liz Pitt
<b>Then and Now</b>	Chris Patterson
<b>Village Matters</b>	Alex de Giorgio-Miller
<b>Wicken Fen</b>	Julia Hammond
<b>Wildlife</b>	Cath Tayleur

---

## Village Update

---

Summer holidays are here – hurrah! The girls are shattered from the last hot few weeks at school and we're all looking forward to a well-earned rest.



### Extreme Weather

Hopefully you found some respite from the extreme heat. Cambridgeshire public health bosses have praised the public for taking heed of the extreme weather warnings, which helped lessen the impact on public services. Cllr Richard Howitt said, "Sadly, extreme weather incidents such as that we saw last week, are going to get more frequent and we all need to learn the steps we need to take to mitigate serious harm to ourselves and others. In particular, we asked people to look out for others, especially older people or those with serious health conditions as well as babies and young children." – something that Reach does well!

### Climate change declaration

On the hottest day on record for the UK, members of Cambridgeshire County Council agreed to sign a declaration which will help put climate change and the natural environment and the very urgent need for action at the forefront of the government's agenda. Councillor Lorna Dupré, chair of the council's Environment and Green Investment committee, said: "Climate change and biodiversity are the two biggest issues of our time and the risks of delayed action are well recognised and severe. The Declaration asks the UK Government to deal with these climate and nature risks by fulfilling the UK's fair share of emission reductions to ensure that the average global temperature increase will not exceed 1.5 degrees; halting and reversing biodiversity decline by 2030 and delivering a more ambitious and integrated environmental protection and decarbonisation plan."

### Private Sector Housing Enforcement Policy

East Cambridgeshire District Council is seeking the views of all members of the public on its revision to the Private Sector Housing Enforcement Policy but would particularly like to hear from anyone who rents privately, and from landlords letting agents and landlord/tenant associations.

The policy seeks to provide clear guidance for landlords and agents about their responsibilities for providing safe homes, identifying how the Council will work with them to achieve this. It aims to raise the standards in the private housing sector, ensuring professionally managed and well-maintained homes are available to rent, targeting those who deliberately or persistently fail to meet their obligations.

For further information on how to get involved, visit: <https://www.eastcambs.gov.uk/housing/private-sector-housing-policies>

### Vaccinations

All children aged 5-11 are now eligible for two doses of the COVID-19 vaccination.

If you are the parent or carer of an eligible child you can quickly and easily book your child's vaccination appointments online via [www.nhs.uk/covidvaccine](http://www.nhs.uk/covidvaccine) or by calling 119. You must accompany your child to their vaccination. You can also choose to walk in at many of the venues, although check with each venue before you travel.

To find out more about the vaccination programme in Cambridgeshire visit [www.thevaccinators.co.uk](http://www.thevaccinators.co.uk). For more information and advice on COVID-19, including the support available to those in need, check out the Council's website or social media channels.

Keep well, keep safe and enjoy the sunshine!

Alex de Giorgio-Miller

---

## Burwell and Reach Car Scheme

---



The Burwell and Reach Car Scheme offers those with travel restrictions or mobility issues a drive to the doctor, dentist, hospital, optician, hairdresser, shopping or just a visit to a friend, at a cost of 30p per mile.

Just leave a message on 07399 154913 with your requirements and someone will get back to you. Or contact Pam King in Reach on 07484 852889.

If anyone in Reach would like to volunteer to drive we are always grateful for extra people. Just leave a message on the answerphone 07399 154913. DBS certificates are required but easy to obtain through the scheme.



**CentrePeace**

**Tuesday 10 - 12.30**  
**Wednesday 2 - 4**  
**Thursday 10 - 12.30**  
**Friday 10 - 12.30**  
**Saturday 10 - 12.30**

*CentrePeace is run by volunteers and supported by our churches. Opening times may be extended as more volunteers feel able to come forward.*

*If you wish to volunteer, please get in touch with Hazel Williams (743897), even if you have worked in the shop in the past.*



---

## A New Finish for a Terracotta or Brick Floor

---



*A brief introduction from the Editor. I thought my floor needed a clean (understatement of the year as it turned out!). Rothwell's advertise this service (amongst others) in this magazine and have done for years, so I asked them to come along and the result was outstanding. Before and after pics in colour can be seen on the outer back colour cover.*

David from Reach has a terracotta floor throughout his kitchen, hall and WC but didn't know what to do with it. Terracotta flooring can be hard to look after and keep clean, so this is a very common problem that Rothwell's help customers with and when David contacted Rothwell's they knew exactly what he needed.

At Rothwell's we have cleaned many brick and terracotta floors and dealt with many issues, from years of general dirt build-up to old peeling sealers and waxes, even carpet glue, but the biggest question is what to do with the floor once we have got it clean.

Up until now there have only been two ways to finish a clay floor - Penetrating sealers or Topical sealers/wax finishes. Penetrating sealers soak into the floor, so don't wear and leave a matt finish, but they leave the rough surface unchanged, so it holds onto dirt and is difficult to keep clean with day to day cleaning. Topical sealers form a smooth easy-to-clean layer on top of the tiles, but they don't soak in, they can wear and flake off. Topical sealers can also have an undesirable "plasticky" finish.

Resin Filling is a new technique developed by Rothwell's together with a leading sealer manufacturer to overcome the disadvantages of both traditional types of sealer. The first coat of resin soaks into the brick or terracotta (and cement grouting) and bonds within the surface of the floor. The subsequent coats are applied before the first application of resin is completely cured. This technique forms a bond between applications so that the resin forms a consistent layer within the floor and through

onto the surface which is fully bonded into the floor and is solid, strong, won't discolour, wear or peel off.

Each coat is applied very generously, flooded in by hand with a paint pad, allowed to soak in and then fully "ragged off" with absorbent cotton cloths. Most floors require two applications until they are fully filled, some may require three. Ragging off the final coat leaves a natural-looking, even, mid-sheen finish that doesn't look overly "plasticky", as topical sealers tend to look.

The nature of the resin (an aliphatic urethane) means it enhances the colours of the brick or terracotta and it doesn't yellow with age, unlike many topical sealers. It is the toughest and longest-lasting resin available. The manufacturers say that the Resin Filling will last the lifetime of the floor, so it's a one-off permanent treatment. The Resin leaves a richly coloured floor with an easy-to-clean, dust free, mid sheen, smooth surface that replaces the normal dusty, rough texture of clay-based floors while showing of their beauty and style.

Before . . . .



After . . . .



Larger, colour, pics can be seen on the back outside cover of this magazine.

If this is something your flooring might benefit from please contact us to see samples and arrange a visit.

Rothwell's is a family firm that was started in 1993 by Max Campbell with the aim of providing the best cleaning service in the area. Being a local firm Rothwell's advertises in Within Reach, every issue, so our contact details can always be found in Within Reach Adverts section, page 15.

**Max Campbell**

---

## Rosanna's Ramblings

---

It's 18 July as I write and my mind is flipping backwards and forwards like a temporal yo-yo. It's 4 years ago, to the day, since our beloved black lab Hector died. We were in the middle of that long, hot drought with no rain for many, many weeks – the grass was parched yellow and it was a tough time for an old dog to go through his last days and weeks. The night before he died, he had a little paddle in the gault pond (and that broke our hearts because he'd been such a joyfully strong swimmer and he could only manage to walk in the shallows among the reeds, lapping at the water) and his struggle to walk home as darkness fell told us that the time had come.



Fast forward, and ... the grass is bleached to a crispbread-textured savanna gold, today is the first ever Red Warning of Extreme Heat and at noon it's already 30 degrees. This time, though, we have a young and bumptious savanna-coloured lab who has just discovered the joys of swimming and jumping in. This morning we set the alarm for 6am, in order to take him out for a walk before the heat built up. And quite a social event that walk was, for dog and humans alike, as everyone who was anyone was also walking (with or without canine company), and there were even a few joggers.

Reach Wood was buzzing with insects and seemed to be feeling rather pleased with itself for being able to offer shade that, even at that early hour, was very welcome. There was a simple theme to the brief conversations – “got to keep cool”, “apparently it's best to keep windows as well as curtains closed”, “do you know, it's forecast still to be 30 degrees at 9pm!”. Milo was oblivious to the air of concern, unease and caution, as he hurtled around in the erroneous belief that simply everyone wants a large lab with a big grin to jump up at them. He wasn't very well-behaved at all, so sorry to those hapless people we met. But he's now flaked out under the table feeling a little woebegone because it's sooooo boring being indoors – so lots of sighs and doggy harrumphs, accompany my typing. As, unfortunately, does an unpleasant miasma of pond-dipped dried-out dog. Oh well, such are the travails of someone who is committed to rambling for your entertainment.

All that aside, it does feel alarming to be warned there's a danger to health and life, even for fit healthy people. I made the decision to cancel my acupuncture patients tomorrow, because the last thing I'd want is for someone to come to harm attending an appointment aimed at helping them feel better. I also thought it was wise to be at home, just to make sure that my driven and stubborn husband stays quiet and indoors. He assures me that he would, of course, do so but experience tells me that our versions of 'quiet and indoors' might not quite mean the same thing.

Bizarrely, my sister in the very south of France is experiencing cooler temperatures than we are (and they have air conditioning in their house), and my daughter is currently on holiday in Mauritius with delightful temperatures around 25 degrees. How silly that, when I heard she was going there, I'd worried how she'd cope with the heat! I sent them a screenshot of the Reach weather forecast on my Met Office app and got a rather mean sweating, grinning emoticon in reply. People can be so cruel sometimes. All I want is for the temperature never to go above the mid 20s. Is that too much to ask?

Having been fortunate enough to have just spent the weekend in Suffolk with a friend who has a swimming pool in her garden and having got used to the cool water, I thought this morning I'd try turning the shower temperature down to cold. It's supposed to be extremely good for us, this chilling and I guess we all know people who are so committed to their cold water swimming that they've made themselves hypothermic in the depths of winter. I would have emerged from my shower feeling virtuous and brave. However, I have to confess that under current conditions, the unheated water in our pipes falls significantly short of the required gasp-inducing bracingness. Perhaps 'just a tad colder than tepid' still did me some good. At least I didn't emerge hot and bothered. But zingily energised? No.



So currently, 12.34pm now and the outdoor thermometer is registering 31 degrees, the house is feeling cool enough for my bare arms to feel chilly. And that brief popping outside to check, with the steep temperature gradient feeling like opening the oven door, just sent my mind far further back than four years. It was 1974, an alarming 48 years ago (gulp) and I was in Samarkand, Uzbekistan, in what was then Soviet Central Asia.

My Russian grandmother had taken my sister and me to the USSR as a reward for getting A for 'O' Level Russian. It was June, the desert heat was something I had never before experienced, 42 degrees in the shade and the ugly tower block hotel was mercifully air-conditioned. I vividly recall leaving the foyer to go outside (we were heading for the mounds of watermelons in the covered market), and the shock of the shimmering wall of heat which hit us. But it was super-dry heat, just as the 40 degree temperatures my young Ukrainian refugee guest in Ely has told me he's used to in the summer back home. His English is coming on really well but stops short of knowing the word 'humidity'. He was, however, very well able to say "Here in England, the water in the air is much more, so when it's hot it feels very different". Yes indeed, Kolya, welcome to the misery of a humidly hot English summer. In normal times, I'd have told him there would be bound to be a thunderstorm coming soon, but that pattern seems to have been broken. Good for nervous pets, but bad for gardens, wild thirsty animals and birds, and greenness.

For the time being, Reach Savanna it is. Stay cool.

**Rosanna Moseley Gore**

---

## Reach Riders

---



All our members have been enjoying the glorious weather - the arena is holding up well with a good covering of grass, so lessons continue with Lucy on a Monday.

We welcome some more new members; we know you will enjoy our facilities.

We are hoping to run some social and fundraising activities in the near future, so will keep you all posted.

**Sue Cameron**

---

## Village Hall Committee

---



On Tuesday 20th September at 8pm we have the Village Hall AGM, following a committee meeting and it would be so great to see a few friendly faces joining us. It's a short meeting we are required to hold by the Charity Commission to formally present the yearly accounts and to provide a functioning committee to administer the income and grants carefully and to ensure the building is run safely for use by the public. At present we are quite a small committee and badly need some new life and ideas - would you be prepared to step forward and join us?

We are aware that there are many new people now living in the Village and make a direct appeal for help. Over the years many people have made such a fantastic contribution to the Hall and we have to find new committee members or the Hall will cease to function. I would be very happy to talk through what's involved and we only meet every other month for about an hour to discuss issues of bookings or maintenance.

We are now preparing a case for grant applications for alternative heating to reduce the high cost of the oil heating and although we have many regular users for classes and events, we need more income to offset the rising costs of heating and lighting and to maintain the fabric of the building during these challenging times.

We are a small community with such a lot to offer and the Village Hall right in the centre is a key part of what makes the village special, but it is only the people living here who can make things happen, please help!

**Sue Elliott Honorary Secretary** 742268

---

## Getting to Know . . . . Rachael Clarke

---



*Me at New Year 2022*

### ***What is your name and where were you born?***

Rachael Clarke and I was born in Fowlmere South Cambridgeshire

### ***Which Schools did you attend and did you enjoy them?***

I attended Fowlmere Primary, Melbourn Village College and Long Road Sixth Form College.



*Me and my brother at Fowlmere Playschool*

### ***What work have you undertaken/currently doing?***

After leaving college I worked for a short while as a trainee Chef. I then moved on to work in a bank in the general ledger team. I then moved on to work as an underwriter for a finance firm and then in Audit Finance at PWC. I have worked there now for 15 years.

### ***How did you come to live in Reach and When?***

I moved into Reach with Michael nearly 7 years ago. We married shortly after. We have known each other since we were 11 years old but had different social circles so did not keep in touch after secondary school. About 9 years ago we were both on the same internet dating site and Michael recognized my profile picture and made contact. After a few dates we realized that we shared many interests and as they say, the rest is history!



*Me and Michael*



*Me and my best friends Natalie, Louise and Julie*



We love the peace and quiet of Reach. It is a beautiful village and I enjoy the local wildlife, even the Muntjac that come through our garden. (Although I wish they would stop eating my strawberries!)

***Do you have any Pets?***

We rehomed 2 rescue cats when we moved into the village. They came from Wood Green Animal shelter and are called Oscar and Loki.



***What, if any, hobbies do you have?***

I like to read, game and enjoy spending quality time with friends and family. I have been an avid reader of many genres since I was a child. I enjoy many board games and often host games nights with my friends.

***What is your Philosophy in Life?***

Never judge a book by its cover. You can never truly know what someone else has been through.

Content provided by **Rachael** and compiled by **Karen Carpenter**.

---

## Reach Community Cafe

---



The café continues to be enjoyed but we notice with the hot weather and summer months that the number of people attending is much less.

We propose to close the café during the month of August and re-open in September so the last café this side of the summer hols was on Friday 29 July and the café will resume on Friday 2 September.

In the autumn we are hoping to extend the 'community café' to include some textile/craft activities (open to all of course). Watch this space ....

**Claire and Helen**





---

## Cricket Report

---

Within Reach's chief cricket reporter has been absent for the past six weeks, so this is necessarily a skeleton report of matches played since the beginning of June. The Wednesday XI continues to steam-roll its way to a glorious second place in the Adams Harrison Midweek Cricket League, failing only to defeat Fulbourn Institute. The more wayward Sunday XI continues to win matches, too, although sometimes it loses them.

### Wednesday 1 June

Reach (93-6) lost to Fulbourn (97-3) by 7 wickets

### Sunday 5 June

Reach (163-6) lost to Lidgate and Ousden (179-8) by 16 runs

### Wednesday 8 June

Reach (135-3) beat Dullingham (66 all out) by 69 runs

### Sunday 12 June

Reach (127 all out) lost to Space Cadets (160-8) by 33 runs (which is all a bit rich really, given that it was thanks to a 50 by Chris Bridgeman, whom we leant to the other side)

### Wednesday 15 June

Reach (130-5) beat Abington (104-7) by 26 runs

### Sunday 19 June

Reach (149-5) beat Chippenham (145 all out) by 5 wickets

### Wednesday 22 June

Reach (112-7) hosed Cambridge Fire and Rescue (108-4) by 4 runs

### Sunday 26 June

Reach (108-6) beat Fulbourn Institute (106 all out) by 4 wickets

### Wednesday 29 June

Reach (129-6) beat Ickleton (103-7) by 26 runs

### Wednesday 6 July

Reach (120-9) beat Dullingham (117-4) by 3 runs

### Sunday 10 July

Reach (152-7) lost to Cambridge Kerala (156-7) by 3 wickets

### Wednesday 13 July

Reach (179-5) beat Linton (70 all out) by 109 runs (Gavin Taylor produced a rare 5 wicket haul for Reach)

### Sunday 17 July

Mini tournament at Ickworth Park. Reach beat Whepstead by 38 runs but then lost to Barrow by 9 runs and Horringer by 8 wickets, to earn an early bath

### Sunday 24 July

Within Reach's chief reporter was back by the boundary rope (or rather inside it) to witness a nail-biter against Newmarket Racing. A century by Michael Mead (one of only about four ever scored by members of the club) seemed to have put Reach in a strong position, but a scratch team of trainers, auctioneers and stable lads nevertheless dug in their hooves and refused to be out, setting up a close finish. With three overs to go, Newmarket Racing appeared to be heading for the knackers' yard, their tails drooping as their required total slowly creeping upwards. But there turned out to be life in the old nags nonetheless. A succession of boundaries from their left-handers brought victory with eight balls to spare – and it was instead the Reach XI which was trucked off to be turned into sausages and glue.

### Ross Clark

---

## The Hythe

---

In 1984 the then Cambridge Branch of the Inland Waterways Association (IWA) erected two plaques describing the history of Reach port on the Hythe.



Amazingly the signs have lasted almost 40 years but now one is missing and the other damaged. During that time many members of the IWA have passed on so the details of the reason, planning and erection of the plaques have been forgotten. I was not a member then but I remember, vaguely, that the then water authority threatened to lower or even replace with drainage pipes both Burwell and Reach Lodes. But why was Reach chosen and not Burwell?

On the plaques it said that a "Detailed historical leaflet" was available at the Village shop which I think closed down very soon after. We may be lucky and records will be hidden somewhere in the vaults of IWA head office; but it would be lovely if there are any Reach residents who have any knowledge, memories or information about these items that they could give to me. Also hopefully there is a Reach magazine of the time that has recorded the event.

### Peter Webb

Pcw35n@btinternet.com

---

## Nature in Reach

---

It certainly is high summer in Reach, the swifts are screaming through the village and the crops are golden and ripe for harvest. But wow, the intense heat we had last week just felt completely surreal. I mostly hunkered down in the house, curtains closed but wandered up the garden occasionally to experience the full force of the 40 degrees. It really was like walking into a sauna, no respite in the shade, grass crunching beneath my feet.



I can't help thinking how hard it must be for our wildlife during these times of drought and extreme heat. The blackbirds in our garden were gaping with the heat last week, and I found a poor wee dehydrated Pygmy shrew wandering dazed and confused in the woods. Our pond has completely dried up so we are trying to provide water throughout the garden for birds and other wildlife.



I've been seeking some refuge on the lode, cruising the cool waterway on my paddle board. I'm regularly rewarded with sightings of grass snakes along with the usual swarms of dragonflies and fish darting around in the shallows.





The weather also makes me appreciate the lovely big beech tree that we have out the front of our house. Planted originally by Ron, he mentioned it came from one of the Cambridge colleges. The tree helps lower the temperature at the front of our house by several degrees and we are most thankful for it during the hot summers. It helps illustrate how important nature will be to helping us adapt to our changing climate. I also need to thank Ron for the many other trees planted long ago in our garden which help provide shady spots and cooler 'microclimates' throughout the day. I'm also thankful for the foresight of those that planted our village woodland which provides a lovely cooler area for dog walks. In time other planting activities like the 24Acres and the trees along the road from Swaffham Prior will also provide dividends of leafy shade. All of which reminds me of the rather lovely saying:

"These trees which he plants, and under whose shade he shall never sit, he loves them for themselves, and for the sake of his children and his children's children, who are to sit beneath the shadow of their spreading boughs."

Attributed to French theologian Hyacinthe Loyson in 1866 but based upon ideas that have their origin in Roman writing... tree-huggers have been around for a long time!

On that note sightings from our local wildlife enthusiasts Joss & Nick.

**Joss Goodchild** - village sightings May, June, July 2023

25.5.22 - kestrel above and sparrowhawk in our Great Lane garden.

26.5. - unusually, a song thrush and pied wagtail in our garden.

26.5. - yellow canary in garden x 2 days. Ate, drank, sang beautifully.

27.5. - Reach Road tree Martin saw a great spotted woodpecker.

28.5 - Martin and Tomasina found salsify flowers near the Gt. Lane allotments.

2.6 - Martin, dog walk Reach Lode, heard a male cuckoo calling, it then flew over the Redfarn's fields, heard another calling in the distance.

4.6 Great spotted woodpecker on telegraph pole, Great Lane.

6.6 Yellowhammers on the road to the fen.

8.6 Bats in our garden (think Pipistrelles).

8.6 - Penny & Ron's sightings: a barn owl flies across the neighbouring field each evening, swifts scream overhead but there are notably fewer swallows. In their garden a great spotted woodpecker feeds its youngster, song thrush on the shed, goldfinches, greenfinches, blue & great tits, starlings, blackbirds, pied wagtail. One early morning Ron saw a hummingbird hawk moth.

8.6 - Jacqui Lewis mentioned she has many visitors to her garden including blue and great tits, grey squirrels and a great spotted woodpecker which feeds on peanuts daily. Pointed out no finches. A stock dove cohabits with wood pigeons, as last year.

9.6 - June bugs (also known as May bugs) fly the track towards our field each night.

3.7 - Hilary hummingbird hawk moths visit the jasmine in her garden.

12.7 - great spotted woodpecker on our lawn, flies up to underside of apple tree leaves for insects. 21 starlings on/near our bird seed feeders. Butterflies in garden: peacock, painted lady, meadow brown, brimstone, cabbage white, small tortoiseshell.

16.7 - a red kite with 2 squawking kestrels mobbing it over Gt Lane. Later, a buzzard overhead with swifts nearby.

16.7 Ron rang, the swifts in their nest boxes fledged, instead of the usual small numbers there were significantly more, a whole flock flying and chittering, the youngsters returned to the box flying low and with great agility, considering this was their maiden flight.

20.7 2 greenfinch on our seed feeder, they are a rarity these days.

14 June - more than 20 common blue damselflies clustered on Old Bar Drove

16 June - a female Broad-bodied chaser dragonfly in our garden.

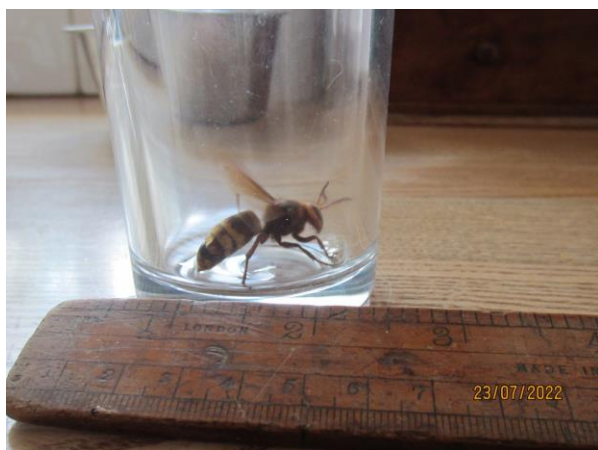
29 June - a surprisingly bold Whitethroat perched very close at hand on Straight Drove.

6 July - a large and noisy flock of Linnet moving through the hedge that bounds the allotments on Barston Drove

14 July - a Marsh Tit in the tall hedge at the top of the 24 Acres

15 July - a dog fox on the area of Tubney Fen mown for hay. Heavy bodied, short legged and dark.

23 July - a European hornet measuring an intimidating 5 cm in length in our kitchen.



**Cath Tayleur**  
cathtayleur@gmail.com



---

## 24Acres Community Orchard

---



The fruit trees on the 24 Acres have a lot to contend with – the soil is thin and there is no shelter from the wind – many of the trees are leaning to the North East (and we have lost a couple this year to the heat and drought). If nothing else, it will develop as an orchard with character. But the spring this year was good for flowering and pollinators and many of the trees – especially the apples – have their first half-decent crop of fruit. Indeed, some are weighed down and their branches have been broken by the weight they are bearing.

Because it has been so warm, a couple of varieties are already ripe for picking. If you walk through the orchard from the main gate they can't be missed – they are all red fruited varieties. The first ones you come to are Ida Red (a red apple from Idaho!) next to which are some trees of Lady Hollandale ('A crisp and juicy red flushed apple' that arose in the Cambridge/Norfolk area). Further on there are some Discovery (acidic, nice served chilled straight from the fridge – a seedling of Worcester Pearmain originating from Essex in the 1940's) – they are not quite ready, but in a week or so from writing this [24 July] they will be. And then on the far side near the cricket pitch are a couple of trees of Red Victoria. This is supposed to be a cooking apple ('An early season sharp cooking apple best picked and used in August. It was found growing near Wisbech in 1884') but when I tried one it was sweet enough to eat as a dessert apple. Please help yourself before the pigeons and wasps get to them (and if you have a neighbour who would like some, please pick some for them too).

Now that the trees are starting to crop, we will need to decide what to do with the fruit in future years. Unlike a commercial orchard we have a mix of varieties ripening at different times, which makes harvesting in the conventional sense (ie all at once) problematic. Please get in touch if you have any suggestions.

**David Thomas**



---

## Wicken Fen

---



*Monk's Lode (by Justin Minns)*

### Summer at the Fen

The reserve is at its most lush and green, with wildflowers, dragonflies, butterflies and warblers all revelling in the diverse habitats at Wicken Fen. As well as enjoying summer strolls, you can also discover more of the reserve by booking a boat trip or hiring bikes – further information on our website or by calling the Visitor Centre on 01353 720274.

### National Nature Reserve Festival (May to Oct 2022)

Natural England is celebrating 70 years since the first NNR was designated. Wicken Fen was designated as a NNR in 1993. We'll be joining the celebrations by offering activities for visitors to enjoy, including the opportunity to interact with people recording wildlife on the Fen.

The following events must be pre-booked in advance, see our website (address below):

### Darwin's Life in Letters – Talk

7pm, Tuesday 13 September

From the Darwin Correspondence Project, a talk encompassing some of the copious letters that Darwin exchanged throughout his life. As a student in Cambridge, he spent time in the Fens

Pre-booking advised

£5 per adult, includes tea and biscuits.

### Bedazzled by Bees (18 and 25 August) and Besotted with Beetles (3 and 11 August)

Family events from the Darwin Correspondence Project. Discover why Charles Darwin was fascinated by bees and beetles with fun activities suitable for age 7+. £4 per child (no charge for accompanying adults, all children must be accompanied).

### Summer family fun at Wicken Fen

With the long summer school break ahead of us, we've got lots of activities for families to enjoy: Dragonfly trail (drop in between 10am to 4pm, trail available daily throughout August) £3 per trail (normal admission applies).

Pond Dipping – 4, 10, 16, 22 August at 11am, 12pm, 2pm and 3pm (£4 per child).

Owl detectives – 12 August at 10:30am, 1pm and 2.45pm (£6 per child).

Dragonfly Safari – 1 and 24 August at 10:30am and 1:30pm (£6 per child).

Please note that children must be accompanied for all activities, there is no charge for accompanying adults for pre-booked activities.

### Footprints: Community Engagement

We've recently started a series of relaxed walks in the fen edge villages. Each walk lasts around an hour, with a different village to explore in rotation. August walks will be on Friday 5 August in Burwell and Friday 19 August in Ely, meeting at 10am. Keep an eye on our website for further information.

A date for your diary: Vision Festival, Saturday 8 October. We'll be celebrating Footprints activities with demonstrations and hands-on activities provided by our brilliant project partners. You can also discover more about the Wicken Fen Vision by joining us for walks, talks, boat trips and much more.

For the latest reserve information, please visit our website [www.nationaltrust.org.uk/wicken-fen](http://www.nationaltrust.org.uk/wicken-fen)

Details of our events can be found on our website at <https://www.nationaltrust.org.uk/wicken-fen-nature-reserve/whats-on>

For the latest reserve information, please visit our website [www.nationaltrust.org.uk/wicken-fen](http://www.nationaltrust.org.uk/wicken-fen)

### Julia Hammond



---

## Anglesey Abbey

---

Ready, set, go!

Summer holidays are here and we're encouraging active play all summer long with Come Out and Play every day and The Anglesey Races every Saturday and throughout the August bank holiday weekend. Bring the whole family and all your friends to visit our Woodland Play area and take part in a relay race, boot camp, target practice, and much, much more. The event is free, normal admission applies, and is open daily from 23<sup>rd</sup> July- 29<sup>th</sup> August.

Dahlia season is upon us in the garden and the display here at Anglesey Abbey is one of the biggest highlights of the year. The boarder will be open from mid-August for visitors to see and find out more about our Dahlia display, and you can also find a new display of dwarf Dahlias in the formal garden. Keep an eye on our social media pages to see the Dahlias at their best.

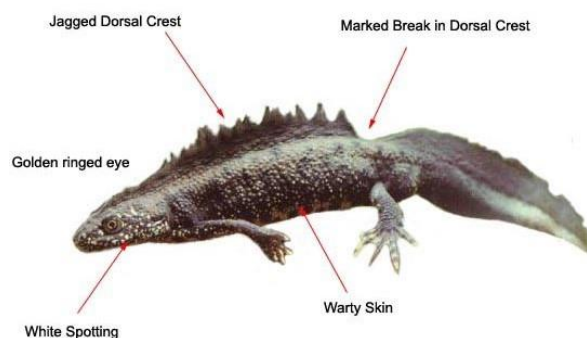
Tickets for our annual fundraising event, Winter Lights, will go on sale in September, for the latest information and so you don't miss out, check our website for the full details.

**Meg Curteis**

---

## Great Crested Newts

---



The National Trust is again considering creating a pond or ponds on the land it retains at the 24Acres beyond our woodland. The biodiversity (and amenity) benefits of creating ponds here are good but would be further strengthened if there was a realistic possibility that the ponds would be colonised by Great Crested Newts. The site is potentially attractive to newts but colonisation depends on the presence of populations of newts nearby. It would be really helpful if residents could supply any sightings (or, who knows, eDNA records) of Great Crested Newts in and around the village in recent years. If these are passed to me I will relay them to the Trust.

**Nick Acklam**

---

## Events Team

---

We are back in full flow as the Events Team!

We hope you enjoyed the Jubilee celebrations, we certainly enjoyed reconnecting. **Thank you to everyone that sent us messages of support, we really appreciate it.**

We have a busy Autumn ahead before we head into the usual Christmas events.

On Sunday 26th June we held our first **Reach Sports Day** since 2019. Great fun was had by all at the usual 'traditional Reach style' races. Every year, I forget the potato race which starts with hopping along without your shoe on! Thankfully the children remember and tradition is upheld!

You'll find pics of the event on the inside front cover of this magazine - this year even the dad's got a trophy for joining in!

**Scarecrow Festival, 9th-11th September 2022**



Get your creative brains whirring! We are holding another scarecrow festival after a wonderful event in 2020. The theme this year will be 'Her Majesty' and if you are a local business, could you help us by offering a prize for the winner?

If you want to take part email us at the usual address or send us a Facebook message.  
[reacheventsteam@btinternet.co.uk](mailto:reacheventsteam@btinternet.co.uk)

Eleanor Williams has approached us about a celebration when the church is reopened, probably some time in October. Do get in touch if you have any ideas about this and we can discuss them at our next meeting.

**Debbie Quilter**



---

## Buckingham Palace Visit

---

The 25<sup>th</sup> of May saw Brian and I going to London, to Buckingham Palace as her Majesty the Queen had very kindly invited us to a Garden Party. What an honour!

Chris Stearn taxi driver drove us down in our car as he knew the way. We were allowed to park on The Mall with my blue badge and I took my mobility scooter. We were actually parked in the midst of the great grandstands built for the Queen's Jubilee Party, very exciting to see that, still being built by scaffolding companies.



The gates to the palace opened at 3pm after various safety checks and we were in an enchanted world. We could go anywhere we wanted to in the gardens. We entered via her Majesty's private entrance and gardens, and saw the private apartments which I hadn't seen before. Bands were playing in nice bandstands and at 3.30pm we queued up for the most delicious afternoon tea, dainty sandwiches, scones, Victoria sandwich and an assortment of lovely cakes. You could have as much as you wanted, with a cup of tea and a tub of ice cream.

The Duke and Duchess of Cambridge were there, Prince Edward and Sophie Wessex, Princess Beatrice.

The Yeoman of the guard had come from the Tower of London to arrange the lines of excited guests.

We enjoyed plenty of lovely teas, we didn't meet any Royals on the day but we have met them all at Sandringham.

All too soon it was six o'clock and the band played God Save the Queen and it was time for Chris Stearn to drive us home. The staff and the Queen's footmen and women were so kind to us at the garden party and it all ran like clockwork.

Me and himself will never forget it.

**Hilary Marsh**

---

## Bottisham and Burwell Photographic Club

---

Our meetings resume after our summer break on Tuesday 13<sup>th</sup> September 2022 at Lode Chapel. This will be a Welcome Evening when members submit images taken during the summer recess for projection and discussion. This will be followed the next week, 20<sup>th</sup> September, by a Print Lecture by Diane Seddon ARPS AFIAP CPAGB BPE3 from Louth, Lincolnshire called 'Odd Things, Part Deux'. Weekly meetings then continue at the Chapel, but with a Zoom meeting held every last Tuesday in the month in order to attract new speakers from around the country.

During the season we look forward to a Print Battle with Melbourn & Ely Photographic Clubs, taking part in the Cambridge Inter-Club Digital Competition with 35 other clubs in the Cambridgeshire area, as well as competing in the internal print and digital competitions held throughout the year.

Meetings are held from 7.30 pm to 9.30 pm at Lode Chapel CB25 9EW in the village of Lode, with a Zoom meeting every last Tuesday in the month. New members are always welcome, as well as Visitors who can attend for a small entrance fee of £3.00 per meeting, which includes refreshments. Our annual subscription is £45.00 per Adult, £21.00 per Student, plus a weekly fee of 50p, which includes refreshments.

If you are interested and would like to join us, please contact our Secretary, Debra Bennett, for further information. Tele: 07722 388770, Email: [secretary.bandbpc@gmail.com](mailto:secretary.bandbpc@gmail.com) or visit our website [www.bottburpc.org](http://www.bottburpc.org) where you will find our new club programme and a gallery showing a selection of our members' work.

**Daphne Hanson** DPAGB HonPAGB  
Chairman

THE OUTSIDE INN  
at Quay Mill  
OPEN WED - SUN  
11.30AM - 11PM  
INDOOR & OUTDOOR  
DINING

T: 01223293383

Church Rd, Stow-cum-Quay



reach us on social media.

 @theoutsideinncambridge

 @theoutsideinn



---

## Tales from a Reach Garden

---

This has been a very dry year so far; a mild winter was followed by a dry and windy spring which has continued into a hot, dry summer. Just this week we have had to deal with temperatures close to 40°C for a couple of days. Even the long, hot, dry summer of 1976 was never this scorching.



We can't water everything in the garden because it would take too long and use far too much water, so we had to decide what to irrigate and only do so in early morning when the temperatures are coolest. In any case, we only ever water the lawn when fresh grass seed has been put down, otherwise the lawn just has to manage without and it will recover eventually. We have a couple of flower borders in full sun which have not been watered since they were planted over 10 years ago, the plants were chosen for their ability to cope with dry summers and up to this year they all coped very well. The recent weather has been so hot and dry that some of the plants, such as echinacea, are struggling. I've started watering just those plants that look like they need it and they are beginning to perk up. The cooler temperatures in the second half of this week are helping too. They'll also benefit from some extra mulching to help them retain moisture around their roots. Other plants which have coped with the heat such as marjoram, lavender, bronze fennel, perovskia, verbena bonariensis, osteospermum, have put out a lot more flowers much earlier than usual, which must have delighted the local butterflies, bees and beetles which have been clustering around them.

Below you can see Echinaceas, flowering in an average July . . . .



Followed by the best of this July's dehydrated specimens.

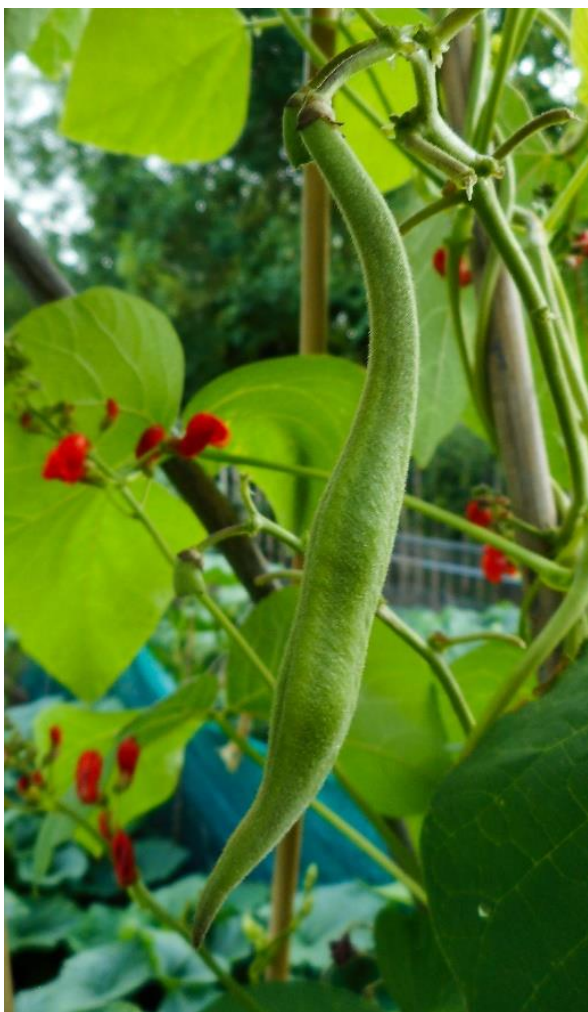


The vegetables and soft fruit are irrigated regularly anyway, but we have kept an eye on the weather forecasts because of the predictions for a heatwave (or even more than one) this summer. When temperatures peaking above 30°C were forecasted, we watered the plants in the relative cool of the early morning. Richard and I noticed that on those days when temperatures approached 40°C many of the plants either just stopped growing or put all their effort into growing seeds or bolting and then flowering.

For some vegetables this was a bonus; we grow broad beans for their seeds and pick the pods when the beans are smaller and sweeter. In the heat, our broad beans ripened at a much faster rate than normal in the pods, so that the crop is pretty much over now. We will cut the plant tops off soon and prepare the bed for growing winter vegetables, which will need plenty of watering to get them off to a good start, especially if the weather continues to be warm and dry.

Our courgettes have produced lots of smaller "fruits" and few, if any, male flowers. In some summers the weather is so mild and damp a lot of male flowers are produced. I use the male flowers to make fritters – the flowers can even be stuffed with soft cheese prior to dipping in batter and frying in olive oil. Alas, we haven't eaten any courgette flower fritters so far this summer, maybe if the courgette glut continues, I shall have to use the female flowers instead (with baby courgettes attached) to enjoy this Italian delicacy.

Our runner beans had barely started cropping when the heatwave occurred, so they went to seed very quickly – the pods developed the tell-tale bumps of seed enlargement rather than putting their effort into longer, fleshier pods. This is a problem because when the beans are formed because it has been too hot, the pods are often shorter and become very stringy and largely inedible. The other concern is that if the plant produces seeds (i.e. beans) rather than fleshy pods, it stops producing flowers, so all these misshapen, bulging pods have to be removed to persuade the runner bean plants to continue to produce long, succulent pods that we enjoy eating.



*Runner bean pod barely 5cm long going to seed.*

Then there were other plants, like mangetout, that just stopped doing anything at all – almost as if they'd gone into suspended animation. The larger of the skinny, pea-like pods of mangetout reached about 1-2cm in length then stopped growing for several days until we had cooler weather more typical of an English summer, then they started to grow again as if nothing odd had happened.

The leafy vegetables like spinach, chard and lettuce have started bolting. Chard and spinach produce a flower spike which can be removed and the leaves can still be eaten.

If lettuce starts bolting (to produce a flower spike), the plant starts to elongate so that instead of having a rosette of leaves like we normally see in lettuce, the inner stem extends upwards and the inner leaves grow above the outer leaves, becoming increasingly bitter to eat. This has started to happen with our "Little Gem" lettuce, so I shall have to sow some more...



*"Little gem" lettuce bolting*

Danuta Gibson

## PRIOR FEN CHAPEL

*"The Little Chapel in the Fen"*

All welcome to our  
**Harvest Festival Service**  
**Sunday 2<sup>nd</sup> October at 3pm**

**Traditional harvest service and hymns**  
**Produce welcome**

Find us at CB7 5YJ, between Upware  
and Swaffham Prior.

Be early to guarantee a seat.

**For more information contact Trish:**  
**07979 868676**



---

## Food Focus

---

### Some different breads you can try making at home

The first recipe is stolen from Charlie Laing. A homemade focaccia aficionado. I was lucky enough to have a mouthful of it last weekend and it was spectacular. It would have looked (and tasted) at home in an artisan baker's shop.



Sadly, I haven't had a moment to attempt it yet, but hope to find time soon. The second recipe is a family one, which thinking about it I may have included in a previous Within Reach with the recipe for Chicken Tikka Masala (sorry!)...but I have made it and it would turn any standard curry into something more superior. The last recipe is a bit of fun for children if you are camping and you want to provide them with a bit of entertainment and involve them in the cooking (and the best time to make the most of being outside as the mess likely to result from mixing these ingredients shouldn't be underestimated). Depending on the age of the child you can admire their work while they enjoy it – you may not want to indulge in it yourself!



### Charlie's Focaccia ...aided by BBC Good Food.

Charlie's top tip is take your time to stretch and fold the dough as this develops the gluten. Limit kneading as this pushes out the much wanted air.

#### Ingredients

- 500g strong bread flour, plus extra for dusting
- 7g dried fast action yeast
- 2 tsp fine sea salt
- 5 tbsp olive oil, plus extra for the tin and to serve
- 1 tsp flaky sea salt
- ¼ small bunch of rosemary, sprigs picked

### Method

#### STEP 1

Tip the flour into a large mixing bowl. Mix the yeast into one side of the flour and the fine salt into the other side. Then mix everything together, this initial separation prevents the salt from killing the yeast.

#### STEP 2

Make a well in the middle of the flour and add 2 tbsp oil and 350-400ml lukewarm water, adding it gradually until you have a slightly sticky dough (you may not need all the water). Sprinkle the work surface with flour and tip the dough onto it, scraping around the sides of the bowl. Knead for 5-10 mins until your dough is soft and less sticky. Put the dough into a clean bowl, cover with a tea towel and leave to prove for 1 hr until doubled in size.

#### STEP 3

Oil a rectangular, shallow tin (25 x 35cm). Tip the dough onto the work surface, then stretch it to fill the tin. Cover with a tea towel and leave to prove for another 35-45 mins.

#### STEP 4

Heat the oven to 220C/200C fan/gas 7. Press your fingers into the dough to make dimples. Mix together 1½ tbsp olive oil, 1 tbsp water and the flaky salt and drizzle over the bread. Push sprigs of rosemary into the dimples in the dough.

#### STEP 5

Bake for 20 mins until golden. Whilst the bread is still hot, drizzle over 1-2 tbsp olive oil. Cut into squares and serve warm or cold with extra olive oil if you like.

### Flat bread Peshwari naan

500 g	plain white flour
1 ½ tsp	bicarbonate of soda
1 ½ tsp	baking powder
1.5 tsp	salt
½ cup	plain yogurt
50 g	chopped sultanas
3 tsp	sugar
30 g	desiccated coconut (or use coconut cream/milk to make up water quantity)

Water to make into firm dough.

Knead lightly, take small pieces make into rounds and roll out thinly and cook on both sides until brown on a dry heavy pan. Heat up in oven covered by foil.

### Campfire flatbreads

Mix natural/greek yogurt and plain flour in roughly equal quantities until it has the consistency of bread dough. Flatten it and cook on a griddle or grate over a fire. Slather with butter and strawberry jam or serve with eggs and bacon.

### Catherine Gibson

## Burwell Celebrates 1st Birthday of Creative Community Shop

Hidden Treasures, part of the Burwell Print Social Enterprise, celebrates throwing open its doors to the public one year ago this July.

The shop rents shelves to local creatives who sell their products and crafts, ranging from artisan chocolate and jewellery, to chutneys, hand-stitched fabric dolls, printed kitchen linens, greeting cards and wall art, with quite a bit more in between.

With its unique and eclectic collection of gifts and crafts, the success of Hidden Treasures has evolved after the team behind Burwell Print – a print and design social training enterprise, supporting and training adults with learning disabilities – decided to expand their social enterprise into retail.

With the shop located just down the road from Burwell Print along the Causeway, the printers have been able to learn a second trade in retail and customer service.



Centre Manager, Jo Graham, explains the inspiration behind the shop:

“The idea behind opening Hidden Treasures was to bring together local creatives and small businesses to broaden the social enterprise community within Burwell and the surrounding villages.”

“There is a real community spirit in the shop. The ‘social’ in social enterprise is very much at the heart of Hidden Treasures as well as Burwell Print. We opened the new shop’s doors just as we were all coming out of the pandemic with an extra appreciation for shopping locally, but you’ll also find such a broad-ranging display of local artistic talent that we think you won’t find anywhere else. What we sell is constantly changing too.”

“We’ve had such lovely feedback from customers over the last 12 months and it’s also been a great way for local creatives to show everyone what they’re doing too. Who knew there was so much talent on our doorstep!”



Jasmine Atkins, just 14 years old, has recently debuted her talent at Hidden Treasures. She explained how her love for jewellery started: “I have been surrounded by lots of interesting characters in the art world, who have inspired and encouraged me to be



creative. Throughout my childhood I have made various arts and crafts and sold them on the edge of my dad's stalls at wood fairs and festivals. I am a strong believer in recycling things. A couple of years ago I found lots of wire in an engineering garage that was about to be chucked in a skip. I took it home and started making things with it. I began twisting wire by hand and with pliers to create rings, bracelets, necklaces, fairy wands and sculptures. I love incorporating colours into my work by twisting beads and crystals in my pieces."

The shop has been an invaluable opportunity for the printers to gain experience in a shop setting and in many cases those printers would not have got this opportunity without the local support of Hidden Treasures. One of the printers enjoyed their experience of working in the shop so much that they went on to volunteer in one of the charity shops in Newmarket.

Helen James is the creative mind behind another local venture, Eliza Nellie – making UK-printed textiles, ranging from tea towels to velvet bags. Her products have been stocked at Hidden Treasures from the day the door opened. She says: "I just thought it's such a fantastic idea to put together lovely things from local makers, whilst giving the fantastic people at Burwell Print the chance to pick up new skills. There should be more companies thinking like this, it's a great community to be part of. It seems crazy to think opening day was a year ago, but it also makes me realise how much the shop has flourished during that time. It's packed full of so many different products from a diverse range of local talents."



Florist & crafter, Debbie Bull adds: "How lucky am I to have been involved with this little gem of a shop since it opened in Burwell, with the opportunity to sell my upcycled planters, floral arrangements and bespoke bird boxes. Commission on orders goes to The Burwell Print Centre supporting the great work this charity continues to provide."

Burwell Print is a registered charity and the Hidden Treasures gift shop can be found at 10b The Causeway in Burwell.

---

## Burwell Museum

---

### Bog oak:

Burwell museum has a huge range of exhibits from recent history, like our replica of the Olympic torch, to the truly ancient, like our glacial boulders. Let's take a quick peek at one of our older exhibits, the bog oak from Swaffham Prior.



Between 10,000 and 5000 years ago sea levels around the UK began to rise. These high sea levels and deposition of sediment caused fenland areas to become waterlogged. Trees that once stood in the forests of the fenland basin fell into the peat below. This oxygen deprived acidic environment preserved the trees leading to the formation of bog oaks.

### Upcoming events:

The museum will be running a series of events over the summer holidays including:

Children's activities Thursday 28 July, 11.30-2.30 - drawing

Children's activities Thursday 4 August, 11.30-2.30 - painting

Children's activities Thursday 18 August, 11.30-2.30 - crafting

Children's activities Thursday 25 August, 11.30-2.30 - modelling

Fenland heroes and villains Thursday 11th and Sunday 14<sup>th</sup> of August

There will be interactive performances from History Needs You playing some fenland natural heroes and villains, including your favourites Boudicca, Hereward, Darwin and more.

Shows will be at 11.30am, 1.00pm and 2.30pm (lasting approximately 30 minutes) on both days and don't require booking.

### Classic Vehicles Rally 21st Sunday August

There will be a rally of classic vehicles at the museum, including a 1928 Austin 12/4, 1949 Landrover series one and a MGB Roadster 1972. If you are interested in bringing a vehicle, not just cars, please email [admin@burwellmuseum.org.uk](mailto:admin@burwellmuseum.org.uk) and we would be delighted to hear from you.

### Heritage Open Days

As part of the Heritage Open Days scheme, where every September volunteers organize events celebrating history and culture, the museum will be open on the 11<sup>th</sup> and 15<sup>th</sup> of September with FREE ADMISSION.

### 295<sup>th</sup> anniversary of the Burwell Barn Fire

Please join us for the 295<sup>th</sup> Burwell Barn Fire anniversary on 8th September 2022. 2pm at St Mary's church, 2.30pm at Cuckolds Row, 3pm Burwell Mill and Museum. Within the museum there will be an exhibition about this tragic event and the impact on the village, as well as songs and poems performed written across the years to honour those who lost their lives.

If there is something else you want to do at the museum, remember you can still book a group visit, outreach talk or Zoom talk by contacting Alison on [education@burwellmuseum.org.uk](mailto:education@burwellmuseum.org.uk).

The museum has just celebrated its 30<sup>th</sup> birthday and is so grateful to all of those who have helped over the years. Volunteers are what started the museum and are what we require to secure its future. There are many varied roles available, and everyone is welcome. If you're interested in being a volunteer please contact the museum at [volunteers@burwellmuseum.org.uk](mailto:volunteers@burwellmuseum.org.uk) to find out more about what's involved.

### Sarah James





---

## Letter from the Vicarage

---

It's exciting to see the work on the church nearing completion and we are very much looking forward to re-opening and planning celebration events and services. We are hoping that this will be early October, and perhaps will be in time to have a harvest service in the church.



After that, we'll be exploring ways of partnering with local groups and making the church available to the community. We'd very much like to hear from you if you have ideas. One of our most popular family activities at St Mary's is our baby and toddler café, on Friday mornings and I'd love to hear from young families in the village to explore what we might be able to offer in Reach church, when its open for business!

### Coming up over the summer . . .

#### Fun Fridays

During the summer holidays we are holding some Fun Fridays for families: Fridays 10am – 12.30pm at St Mary's with outdoor and indoor activities, alongside our Refresh Café toddler area. Refreshments will be available, including a free simple sandwich lunch. These will be continuing until 19<sup>th</sup> August, then taking a break, before Refresh Café begins again in its usual format on 2<sup>nd</sup> September.

#### September Specials

During September the church's year turns to focus on the natural world and harvest. We will be holding a Climate Sunday service and Harvest Festival at St Mary's. There will also be a chance for more in-depth exploration of St Mary's church and churchyard at our Open Day on Saturday 17<sup>th</sup> September, with Tower Tours, weather permitting.

#### Further information

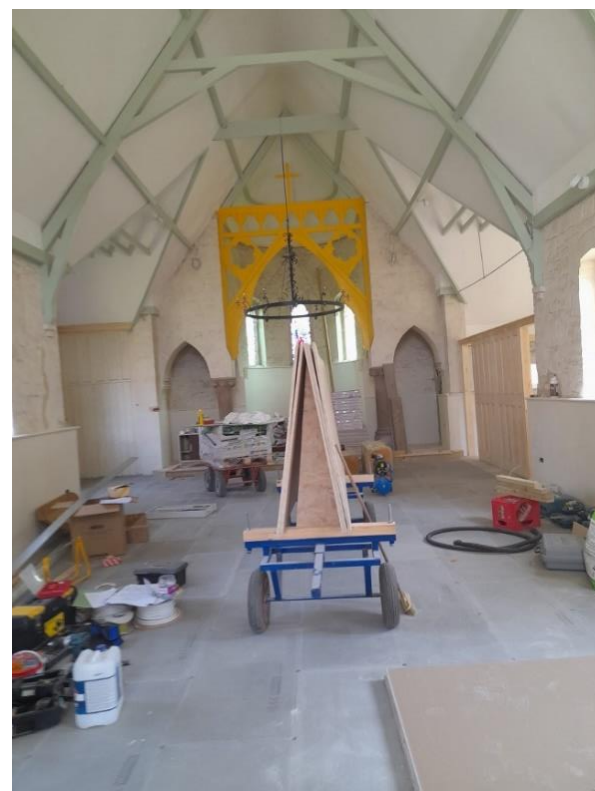
For updates about what's going on at St Mary's, Burwell or St Etheldreda's, Reach, please see our Facebook pages and website. We now aim to livestream our weekly 10am Sunday service on Facebook. Refresh Café is in St Mary's every Friday morning from 10am, for babies and toddlers with their carers and we also have Messy Church events. Please get in touch if you would like more information about these or any of our events or services, including weddings, christenings and baby thanksgivings, or if you would value an opportunity to chat. If you find yourself in need of the support of the Foodbank, I do have emergency vouchers, or you can contact Ely Foodbank on 01353 468626.

**Revd Canon Dr Eleanor Williams**, Vicar of Burwell with Reach, 01638 741262 [vicar@stmarysburwell.org.uk](mailto:vicar@stmarysburwell.org.uk)  
[www.stmarysburwell.org.uk](http://www.stmarysburwell.org.uk)  
[www.facebook.com/stmarysburwell](https://www.facebook.com/stmarysburwell)

---

## Reach Church Development Update

---



As you can see from the pictures, things continue to progress very well in Reach Church.

Now that the partitions for the servery and toilets are in place, it's much easier to envisage how it will look when it is finished. The servery is very small, but we've chosen the kitchen fittings and appliances and have managed to fit in everything we'll need to serve simple refreshments. If we want to serve a full meal, however, we'll still be booking the Village Hall, a good example of how the two venues will complement each other.

The groundworks to install the drains, water and upgraded electricity supply have started and hopefully will not cause too much disruption in the village. Part of the groundworks includes the new ramped path up to the door to improve wheelchair access. We're looking forward to begin landscaping the garden and it's good to see that the bees have taken up residence again!

The ceiling and walls of the church are all insulated, plastered and painted and look very smart. We've kept the same colours as before, but of course, it's all clean and fresh. The door height has been raised so that in future there shouldn't be any problems with carrying in a coffin. There is a new paneled partition to the vestry, in the position of the old organ and we have chosen a digital instrument to replace the organ. The vestry itself seems very much bigger and might be used as a small meeting room in future.

The electricians have been extremely busy, rewiring the whole building and have installed new lighting. Wiring is also in place for the audiovisual system, which includes a hearing loop for those who use hearing aids, microphones and speakers and large screen for projection. The work to install the underfloor heating is also underway and when that has finished and its protective coating has dried, the wooden flooring will be laid.

The builders say they are on schedule for finishing in October as planned, so hopefully by the time we write for the next issue of Within Reach, we'll be able to publicise details of our opening events, when everyone can come and see the finished results.

#### Reach Church Development Group

---

## Church Services in Reach

---

### Sunday 7<sup>th</sup> August

8.30am Holy Communion

### Sunday 4<sup>th</sup> September

8.30am Holy Communion

---

## Cricket Report

---

Reach Cricket Club have recently been awarded a small grant from The Googly Fund, whose purpose is to encourage people to play friendly cricket. So we bought 2 sets of kit and we'd like to encourage anyone who would like to try cricket to come and have a game.

We're going to leave 1 space in every Sunday friendly team until the end of the season for someone who hasn't played before, or who hasn't played for a long time. You don't need to worry about wearing cricket whites and we now have all the kit you'll need to get involved. And you don't need to be competent at cricket - these are friendly games where the aim is to involve villagers.

Our team has been 100% male so far this season, but we've played several teams with female players and we'd love to be a bit more diverse too - everyone is welcome. We've had players this year ranging in age from 13 to 67, so age is no excuse either. If you'd like to play a game please get in touch with me at [rob@stead.org.uk](mailto:rob@stead.org.uk).

Our fixtures for the rest of the year are on our website: <https://reach.play-cricket.com/Matches?tab=Fixture>

**Rob Steed**

---

## Know Your Parish Council

---

Your councillors are:

Nick Acklam	Vice Chair	743749
Charlotte Cane	Councillor	741064
Cristine Fletcher	Councillor	07763 529886
David McMillan	Councillor	741259
Matt Newman	Councillor	07786 988175
Hannah Webb	Councillor	
Vacancy	Councillor	

Charlotte Cane	District Councillor
John Trapp	District Councillor
Joshua Schumann	County Councillor

Should there be a vacancy and you are interested in being co-opted onto the Parish Council please get in touch with the Clerk whose contact details are below.

Meetings take place in the **Village Hall** on the first **Tuesday** of each month. They start at **7.00pm** and all Reach villagers are welcome to attend.

Your Clerk is Susan Bailey  
29 Great Lane Reach CB25 0JF; 01638 743794  
[clerk@reachparishcouncil.org](mailto:clerk@reachparishcouncil.org)



---

## Know Your District Councillors

---



The Council's new Growth & Infrastructure Fund opened for bids in July. Proposed projects will be considered with regard to the following criteria:

- Evidence that the project is necessary to support local growth
- The benefits provided by the project
- Evidence of local resident and stakeholder involvement in and support for the project
- Alignment with the Council's infrastructure priorities
- The level of match funding that the project has secured
- Commitment to Net Zero Carbon and a green approach, demonstrating the highest possible quality standards in terms of design, materials, workmanship and environment in its delivery in order to achieve sustainability.

The ability of the applicant to deliver the expected benefits on time and within budget will also be considered. Further information will be found on:

<https://www.eastcambs.gov.uk/business/east-cambridgeshire-growth-and-infrastructure-fund>

We continue to receive complaints about missed bin collections. The Chief Executive has recently updated Councillors about the bin collections.

1. The service still remains vulnerable to short term absence of key operational staff. Work is now beginning to identify a pool of external capacity for now and in the future. More fundamentally, the team is assessing the requirement for permanent in-house additional resources.

2. External management consultancy is now in place, to review the reconfiguration and stabilise back-office systems, as well as long term changes to terms and conditions of staff and working arrangements.

3. We have made considerable progress on engaging with staff and their trade union representatives. Work will now begin on a fundamental review of the terms and conditions of staff and working arrangements, together with the appropriate consultation. It is expected that this will be concluded by autumn this year.

Waste service disruption information is available online at <https://www.eastcambs.gov.uk/east-cambs-street-scene/waste-service-disruptions>

A report prepared in October 2021 for local planning authorities in Cambridgeshire and West Suffolk says that from 2020 to 2040, 215 more East Cambridgeshire households each year will need affordable housing to rent. Of these homes, 75% should be social rent and 25% affordable rent. This compares to a need for 39 additional properties for affordable home ownership each year.

Over the last ten years, East Cambridgeshire has seen an increase in median house prices of 55.4% compared to 27.6% nationally and 42.5% regionally. Median rental prices in the private rented sector across East Cambridgeshire were £795 per calendar month at the time of the report. This was higher than the national equivalent of £695 and the same as the regional equivalent.

The median house price in East Cambridgeshire was £290,998. This was 27% above the national average and 3% above the regional average.

The report noted that there was a current (282) and projected (697) need for about 979 wheelchair user dwellings to 2040 across East Cambridgeshire.

The Council underspent its £14.3M budget by £2.4M in 2021/22. A large proportion of the underspend was due to receipt of COVID-related government grants.

The Council spent only around 10% of its capital budget—just £480,750 which is an underspend of £4,279,694. Some of the key components of this underspend are:

- Waste vehicles—delayed while we await Government's Waste Strategy.
- Depot—refurbishment delayed to reassess proposals.
- Disability Facilities Grant— reduced spending due to COVID restrictions.

Our next Councillors' Surgery will be at Brinkley Memorial Hall at 6.30pm on Thursday 22 September for one hour, and thereafter at the Red Lion at Brinkley.

**Charlotte Cane**

[charlotte.cane@eastcambs.gov.uk](mailto:charlotte.cane@eastcambs.gov.uk) 01638 741064

**John Trapp**

[john.trapp@eastcambs.gov.uk](mailto:john.trapp@eastcambs.gov.uk) 01223 812120

---

## Parish Council Meeting Minutes

---

### Minutes of Reach Parish Council meeting held at in the village hall on Tuesday 7<sup>th</sup> June 2022 at 7.00pm.

#### Attendance

Nick Acklam	Vice Chair	Not Present
Charlotte Cane	Councillor	Not Present
David McMillan	Councillor	Present
Cris Fletcher	Councillor	Present
Hannah Webb	Councillor	Present
Susan Bailey	Clerk	Present
Charlotte Cane	District Councillor	Not Present
Joshua Schumann	County Councillor	Not Present

**Apologies for absence** - Approved. Councillor McMillan was nominated and approved to Chair the meeting.

#### Forum for members of the public.

There were none.

#### 1. New Councillor.

The PC welcomed Matt Newman as a new Councillor. There is still a vacancy available.

#### 2. Declaration of Interests

There were none.

#### 3. Planning

There was none.

#### 4. District Councillor Report

There has been very little activity at the Council the last month. At the Annual Meeting of the Council in May, the representation on the committees was confirmed, and both of us are on the same committees as last year:

Charlotte: Audit Committee, Ethical Guidance

John Trapp: Finance & Assets, Operational Services, Planning

We are also substitutes on other committees.

The main problem faced by the Council the past couple of months is the collection of waste, with the crews experiencing problems with the new routes, and this problem has been exacerbated by HGV drivers having Covid, and not able to work. Some crews have been out collecting waste on the two Jubilee bank holidays which has helped to reduce the backlog, and for which we are all very grateful.

Information on collections can be gleaned from this site:

<https://www.eastcambs.gov.uk/east-cambs-street-scene/waste-service-disruptions>

There will be a Zoom meeting on Wednesday 22 June from 6 p.m. with Sustrans who will be presenting an introduction to the route feasibility studies of cycle paths from Reach and Swaffham Prior to Burwell. An invitation will be sent to PCs in these two villages.

#### 5. County Councillor Report

None received.

#### 6. Minutes of previous Meeting

Approved as correct.



### **7.1 Reach Grant Fund**

A request for funding of the Jubilee events was received from The Events Team, it was noted that this should have been received at an earlier meeting. Approved.

A request was received for £120 for the annual Reach sports day, to take place at the end of June. Approved.

### **7.2 Finance**

Nothing to report.

### **7.3 Parish Council Members**

Nothing to report.

### **7.4 Play Spaces**

Nothing to report.

### **7.5 Rights of Way**

Nothing to report.

### **7.6 24Acres Committee**

Nothing to report.

### **7.7 Neighbourhood Plan**

Ian Poole has now completed the draft responses to the comments and the separate draft table of proposed modifications to the Plan, following the consultation, and to bring it up to date. The NP Committee will meet to consider the suggested amendments to the draft Plan and then put it to the PC for approval. This process will then be shared with the village.

The Neighbourhood Plan committee are in the process of drawing up a budget for the next financial year in order to apply to locality for the necessary funding to complete the project.

### **7.8 Friends Of Reach Wood**

Nothing to report.

### **7.9 A to B1102 Group**

Nothing to report.

## **8. Approve Annual Governance Statement**

Approved.

## **9. Approve the Accountancy statement**

Approved.

## **10. Sunnica Update**

Sunnica has run into difficulties connecting its proposed solar farm to the Grid. The land within the substation at Weirs Drove that it proposed for the purpose in its initial consultation has been ruled inadequate by National Grid. Efforts to acquire more land adjacent to the substation by compulsory purchase have run into difficulties although it is unclear precisely what the problems are. Sunnica is therefore proposing to create a new point of access to the Grid near Chippenham Park. It is unclear whether this would supplement or supersede connectivity at Burwell. There remains a realistic possibility of substantial development - some of the proposed infrastructure is 12 metres high - on an expended site at Weirs Drove.

The PC missed an opportunity to comment on the consultation period for the proposed new access point at Chippenham although many other local PCs have expressed objections, seeing it as inadequate. Councillor Acklam has asked to be kept up to date on developments by 'Say No to Sunnica' and, as registered parties to Planning Inspectorate review of Sunnica's application, the PC can submit views once there is clarity on what Sunnica eventually decides to build at Weirs Dove.

#### 11. Burwell solar Farm

EDF have requested to engage with the village having taken ownership of the solar farm on Hightown Drove, Burwell Fen. In July 2020 the PC expressed reservations about (not objections to) this development considering that the Planning Committee had insufficient information to make an informed decision about the proposal. The Planning Committee approved the development. It is believed that construction work is already under way to allow the development to feed energy into the grid. Following discussion, the PC concluded that they should engage with EDF, starting by inviting them to a future PC meeting so that we can hear more about its plans for the site especially mitigating its visual impact and to learn more about how we can avail ourselves of its community benefit fund. The PC would also like to join EDF's community liaison group, and Councillor Acklam was nominated as PC representative.

#### 12. Playground Report

The annual playground inspection had taken place. There are two main problem areas which were also highlighted last year. Firstly, the swing on the green needs replacing. A contractor had been appointed but the work was never completed. **Clerk** to make contact again to see if this contractor is able to complete the work. Secondly, the bolts on the new playground have come loose again. These were tightened by Councillor McMillan last year. **Clerk** to contact the installer to see if this is a product fault and take their advice.

#### 13. IWA – Reach Port plaques & GOBA mooring

The Inland Waterways Association would like to renew the two information boards on The Hythe detailing the history of Reach Port. They would like to engage with residents to obtain correct historical information. The PC were very grateful for this. Approved. It was suggested that a historic information board in the centre of the village would be a good idea. This will be discussed at another meeting.

GOBA had visited their mooring on The Hythe and were unsatisfied with the facility. Following discussion, the PC agreed that it is important to the village for there to be a mooring facility. It was also agreed that to have this facility available it would need to be maintained correctly including mowing regularly. **Councillor Acklam** to inform GOBA. **Clerk** to arrange mowing of the GOBA mooring area.

#### 14. Payments

E. on - Power on the green	£7.88
CR Contracting - Mowing	£276.50
Fenland Leisure - Playground inspection	£132
Parish online – affiliation fees	£30
Fuse – IT	£729.65
DoeSport – Tennis court maintenance	£3422.40
D McMillan – computer battery	£39.79
Amey Cespa – Pavilion match funding	£2066.40
Events Team – Jubilee event	£352.73
S Bailey – postage	£19.14

## **DRAFT Minutes of Reach Parish Council meeting held at in the village hall on Tuesday 7<sup>th</sup> July 2022 at 7.00pm.**

#### Attendance

Nick Acklam	Vice Chair	Present
Charlotte Cane	Councillor	Not Present
David McMillan	Councillor	Not Present
Cris Fletcher	Councillor	Present
Hannah Webb	Councillor	Not Present
Matt Newman	Councillor	Present
Susan Bailey	Clerk	Present
Charlotte Cane	District Councillor	Not Present
Joshua Schumann	County Councillor	Not Present



**Apologies for absence** - Approved. Councillor would like to state that she was absent due to Covid affecting her immediate family and although she was testing negative she felt it prudent to avoid the meeting.

Councillor Acklam Chaired the meeting.

**Forum for members of the public.**

There were none.

**1. Declaration of Interests**

There were none.

**2. Planning**

There was none.

**3. District Councillor Report**

Operational Services Committee

1. The ECDC Environment & Climate Change Strategy and Action Plan June 2022 was approved. Little has changed since the publication of the plan last year.
2. The Private Sector Housing Enforcement Policy was adopted and will now be sent out for consultation. It tightens up the legislation and penalties on landlords whose properties are sub-standard and not safe. The problem is to make occupants of rented properties more aware of their rights to have decent and safe accommodation.
3. At last, ECSS, the Council-owned company that does waste collection for the District, has recognised the problems that it has with waste collection, and has drawn up a strategic action plan. Information on missed collections can be gleaned from this site: <https://www.eastcambs.gov.uk/east-cambs-street-scene/waste-service-disruptions> However, information as to when missed collections will be collected is not available, and the advice is to leave the rubbish out on the street until it is collected. Please contact the Council - [waste@eastcambs.gov.uk](mailto:waste@eastcambs.gov.uk) and copy John and Charlotte to report missed collections.

Finance & Assets Committee

1. It was decided to: review disability access to every East Cambridgeshire District Council (ECDC) owned public toilet in East Cambridgeshire and report the findings to the meeting of Finance and Assets Committee in November 2022. The review should include details of the level of ECDC provision across the District, whether the current provision is capable of being adapted for accessible provision, and if so, the associated cost implications of the works; notify Changing Places that there is provision of a Changing Places toilet at the Hive Leisure Centre, Ely and request that this is reflected on their website; write to businesses and partner organisations to make them aware of the funding when the next round of Changing Places funding is announced; ensure that existing public toilets are signed in line with Crohn's & Colitis UK guidance.  
It became apparent that although use of the Changing Places toilet at the Hive was free, there was a charge for using the associated shower facilities. Following a request from the District Council, this charge has also been removed.
2. Approve the First Homes Interim Policy Statement to encourage builders to provide First Homes.
3. Approve the eligibility criteria for the Growth & Infrastructure Fund and to note that the fund will be opened for applications on Monday 11 July 2022 and close on Friday 7 October 2022; the Council reserves the right to re-open the fund for further round(s) of applications in the event that it is not fully utilised. Approve the Growth & Infrastructure Fund Scoring Panel Terms of Reference and appoint 7 Members, one of whom is John Trapp, to the Growth & Infrastructure Fund Scoring Panel.
4. Overall, the Council has a year-end underspend of £2,367,039 when compared to its approved revenue budget of £14,310,015. The overall position for the Council on Capital is an outturn of £480,750, which is an underspend of £4,279,694 compared to the revised budget. Some of the savings were due to not replacing staff immediately, and not replacing waste collection vehicles, as planned and budgeted for.

**4. County Councillor Report**

None received.

**5. Minutes of previous Meeting**

Approved as correct.

### **6.1 Reach Grant Fund**

Nothing to report

### **6.2 Finance**

Nothing to report.

### **6.3 Parish Council Members**

Nothing to report.

### **6.4 Play Spaces**

Repairs arising from the yearly inspection are in progress.

### **6.5 Rights of Way**

Nothing to report.

### **6.6 24Acres Committee**

Nothing to report.

### **6.7 Neighbourhood Plan**

Work to review the comments on the consultation is nearing completion. The Group is planning to meet on 20 July to finalise the draft prior to submitting it to the PC for approval. The application process to Locality for the necessary funding for the next financial year is underway.

### **6.8 Friends Of Reach Wood**

Wildflower seed sowing took place at Reach Wood Meadow in October last year.

In late June 2021 a plant survey was carried out of the area to be sown and it found more than 30 species of wildflowers and grasses growing there.

The N13 wildflower seed mix that was used was supposed to include 24 species including Greater Knapweed, Viper's Bugloss and Kidney Vetch.

A similar plant survey has been carried out this year and there are now more than 50 species of wildflowers and grasses at the site.

That appears to be around 20 more than last year (a 40% increase in species richness).

Please note that neither plant survey was exhaustive, so it is entirely possible that some things may have been missed. It seems that there has been a fair amount of rabbit damage to the trial meadow area; far more than last year.

It is also amazing how heterogeneous such a small area of grassland can be, with some areas of luxurious tall growth and others with bare ground.

So, what have we learned so far?

Of the 24 species that we sowed, 18 had not been recorded at the site before.

The list of successful introductions includes Clustered Bellflower, Common Knapweed, Greater Knapweed, Wild Basil, Viper's Bugloss, Lady's Bedstraw, Burnet Saxifrage, Self Heal, Yellow Rattle and Salad Burnet.

Notable apparent failures include Dropwort, Field Scabious, Oxeye Daisy, Common Restharrow, Wild Marjoram, Hoary Plantain and Small Scabious. It is presumed that this was mostly down to dry conditions and rabbit grazing of seedlings.

What is odd is that there are now also other meadow plants present that were not recorded before. This of course might be down to being present in the N13 wildflower mix.

They include Corn Cockle, Corn Chamomile, Cut-leaved Cranesbill and Field Poppy.

It is too early to know whether all the introduced plants will survive and reproduce, but it seems that we can cautiously claim a 'win' for biodiversity at our trial meadow site.

Establishing diverse wildflower meadows is notoriously tricky, so we must be careful not to set our expectations too high.

Having said that, this has been an interesting experiment that will be monitored in the years to come, and it may inspire the seeding of other grassland areas and verges throughout the Parish.

### **6.9 A to B1102 Group**

Nothing to report.



## **7. Sunnica update**

The last date to comment to the Inspectorate regarding the new options is tomorrow, 6<sup>th</sup> July. Councillor Acklam to write stating that there is a lack of detail making it impossible to make an informed view.

A meeting will be held by the Inspectorate at The Bedford Hotel on 26<sup>th</sup> July. Councillor Acklam to attend.

## **8. Verge cutting schedule**

### **MOWING BY CCC HIGHWAYS**

It is proving difficult to maintain a dialogue with the Highways department. Councillor Acklam spoke to Nicola Burden at Highways in May & received confirmation that there would be no cuts of the roadside verges of the parish or the Drying Ground until September. Unfortunately, there are outstanding questions about how and where the village, might complement the mowing regime by removing cuttings and sowing a wildflower mix. Clarification has been requested. The PC approves of this new mowing regime on a trial basis to see if it brings biodiversity benefits.

## **9. Mowing in the Cemetery**

The top end of the cemetery has not been mown this growing season. This is the area that, at present, does not contain any graves. The request was prompted by the identification of emerging orchids in the area. Steve Boreham and Councillor Acklam have monitored the area subsequently. Bee orchids have flowered and are currently setting seed. This is good news for biodiversity in the village. A management plan will be produced which will help us build on this whilst enabling the cemetery to fulfil its function as a burial ground. We will also produce a more accurate map of the cemetery to help this process.

The PC approved a resumption of mowing of the top end of the cemetery later in July once the orchids have seeded and to continue this regime until December. This and the removal of the cuttings (which we will also undertake) is the prescribed approach for improving biodiversity of 'unimproved' mesotrophic grassland which is what we are lucky enough to have in the cemetery. **Councillor Acklam** to discuss with CR Contracting.

## **10. August meeting**

A meeting will only be held in August should there be business to discuss that is time important. If an August meeting is required only the time important item will be discussed.

## **11. Sustrans Member Seminar report – Councillor McMillan**

The meeting was started by Alan Sharp Chair of ECDC. Matt Barber of Sustrans opened up by putting the work in to context, referring to Dept for Transport Local Transport Note 1/20 which sets out the design criteria for Cycleways. This recommends that cycling, motor vehicles and pedestrians should all be separated. Cycleways should be 3 metres wide and tarmac. To put things in context Cambridgeshire County Council bid to Active Travel England who allocate funds. Last year Cambs bid for £6.5m and got a £600,000 grant.

Nigel Brigham of Sustrans then went into detail of East Cambs feasibility studies. Our route is for Reach- Swaffham Prior – Burwell.

Nigel highlighted the problem of crossing the Devils Dyke. On the B1102 there is not enough width for a cycle path without destroying part of the Dyke. He then looked at the disused railway line as a crossing but that is described as a very valuable ecological area. No real solution was offered.

Councillor McMillan pointed out that Fair Green makes a possible crossing point and that Reach casual cyclists are most likely to want to access to the Co-op and the school. If they had to go to Prior and then cycle to Burwell they would probably get in their cars and drive. I emphasised that that sort of short journey is the most polluting. In his reply Nigel Brigham said that the linking of Swaffham Prior, Reach and Burwell was at ECDC's request. From a parochial point of view, we want the route to be Swaffham Prior-Reach-Burwell.

## **12. Burwell solar farm report – Councillor Acklam**

Councillor Acklam attended the inaugural meeting of the Burwell Solar Farm Community Liaison Group (CLG) today. The meeting was hosted by EDF who own development rights at the site. David Brown and John Trapp were there as District Councillors and there were three Parish Councillors from Burwell. David Brown was appointed Chair of the CLG.

Councillor Acklam asked that the draft Terms of Reference of the Group (attached) were amended to allow for the Group to meet after the construction phase is completed (1.3). This was accepted. Councillor Acklam also suggested the National Trust was invited to attend as a significant stakeholder on Burwell Fen. This was also accepted.

EDF's construction begins next month and is scheduled to be completed by April 2023. The work we can see on Hightown Drove at the moment is National Grid's expansion of the Weirs Drove substation and installation of 500Mw

transformer to enable electricity from the site to feed into the Grid. This is being conducted under the Grid's permitted development rights; therefore the PC have not had a chance to view or comment on it. The transformer is likely to be most intrusive aspect of the development.

A few Reach residents may be affected by the noise of construction and, in particular, construction traffic using Hightown Drove. The traffic will not travel on the roads of Reach parish. At its peak there will be five HGVs per day delivering to the site. None will be oversized, and no road closures are required. Marshalls will be employed at the tight junctions on Reach Road/Weirs Drove and Weirs Drove and deliveries can only occur within standard working hours.

EDF confirmed that there will be no batteries or storage facilities on site. It also confirmed that there is no peat on site which might have offered carbon sequestration opportunities. As with the original developer, EDF's intention is to mitigate the visual impact of the farm by planting reed beds. The PC has concerns about the ability of reeds to screen a site of this kind from the raised footpaths of Reach and Burwell Lodes. The challenge will be greater if the current agricultural drainage of the site is retained as the reeds will struggle in dry conditions. EDF were amenable to further discussions on mitigations and on the management of the site to enhance biodiversity and Councillor Acklam has offered to bring along some of the experts living in Reach to assist.

EDF confirmed that the community fund associated with the project amounts to £20K per annum for the 40-year lifespan of the farm. At the next meeting the Group would need to agree on how the money is allocated. There were no prescriptions on how it was spent. That would be for the Group to decide. Part of the consideration would be whether the sum would be split between the two primary beneficiaries (ie Reach PC and Burwell PC) or managed as a single pot for the benefit of the local community as a whole.

EDF said that it would come to the next meeting with examples of how fund was apportioned in other solar schemes. There was mention of a typical 80-20 or 70-30 split but there was no detail of how these figures were arrived at. Burwell PC representatives indicated that they wanted to see a ring fenced allocation and made reference to a project that they have in mind. Councillor Trapp and Councillor Acklam counselled for a more joined up approach and wondered if some (or all) of the funding could assist the creation of traffic free routes between Reach and Burwell and Reach and Swaffham Prior.

This was a worthwhile meeting, and the PC will continue to participate regardless of the financial split as the community fund will represent a significant income flow for Reach PC for the foreseeable future. The next meeting was provisionally scheduled for Wednesday 21 September. I also recommend that we invite EDF to a future meeting of the PC so that they can talk about their plans and take questions from villagers. **Clerk** to invite EDF to the October meeting.

### AOB

Following the Burwell Solar Farm meeting the PC members had received an email from Councillor Trapp, several members of the Council found his comments inappropriate & distasteful. Councillor Fletcher had emailed the PC and Councillor Trapp. No reply had been received. The PC were disappointed and surprised that Councillor Trapp would make such comments considering his position as District Councillor. The PC were also surprised that he had not apologised. **Councillor Acklam** as Chair to write to Councillor Trapp.

NB. Councillor Trapp emailed to apologise during the meeting. Therefore no more action to be taken.

### 13. Payments

E. on - Power on the green	£26.78
S Bailey – Clerks salary	Confidential
CR Contracting – mowing contract	£383.00
SR Landscape – Cemetery tree works	£500
HCR – legal work Clunch pit	£376.80
R Clarke – Pavilion repayment	£19,230.48
N Bridgeman – Grant Fund – Sports day	£71.00
C Taylaur – Grant Fund – Sports day	£17.03



---

## Draft Minutes of the Reach Neighbourhood Plan Project Group

---

**Draft minutes of the Reach Neighbourhood Plan Project Group meeting held on Wednesday 20<sup>th</sup> July 2022 at 7.30pm in Reach Village Hall**

**Attendance:**

Charlotte Cane  
Jo Riches  
Catherine Gibson

Present – PC & NP Group Member  
Present – NP Group Member  
Present – Group Chair

Ian Poole – Consultant Places4People

**Present:**

5 members of the public were in attendance

Apologies for absence received and approved.

**1. To agree proposed modifications to the Neighbourhood Plan following pre-submission Consultation of June 2021**

The Chair announced that the grant offer from Locality for the requested amount of £1693 was received yesterday – which now enables the working group to get on and plan the proposed drop-in session which is likely to take place in October/November.

A member of the public was confused about the process going forward to referendum so Ian Poole, the consultant outlined it. Firstly the PC needs to approve the revised draft before it is submitted, together with a Basic Conditions Statement, Consultation Statement and the supporting evidence documents to East Cambridgeshire District Council (ECDC). Once it has been submitted a minimum 6 week consultation period ensues, undertaken by the District Council. All comments received at that time will then go to an independent examiner – who will then review the plan against the basic conditions and determine if any changes are needed. Ultimately ECDC will then call the referendum, organized in the same way as an election, run by ECDC electoral services. The publication of the results of the referendum depend on the DC processes, some carry out the count straight after the polling station closes while others do the count the following day.

Another member of the public asked what timescale we were looking at.

The following timetable could be achievable, but is heavily reliant on ECDC who will manage the process once the Plan has been submitted:

September – Parish Council approve modifications to Plan and submission of Plan to ECDC

September – Plan and supporting documents submitted to ECDC

October/November – ECDC carry out 6 weeks Submission Consultation

December/January – Independent Examination

February/March - Referendum

Copies of the schedule of proposed post consultation modifications were handed out. Changes which are bringing the plan up to date – and proposed changes in response to comments, are differentiated on the document by different colours. The working group agreed all the changes which brought the plan up to date. The proposed changes in response to comments included the exclusion of the greenfield site to the west of Hill Farm from the development envelope. Once planning permission had been granted on the preferred brown field site it was deemed, on reflection of local opinion and consultation feedback, to remove the greenfield element of the site. There was some discussion about Vine House and its history. The current owner has disagreed with the assessment of Vine House in the draft NPs List of Buildings of Historic Interest.

Maps show a house on the same footprint pre 1970s; the current owner hasn't offered any evidence to back his claim that it was completely rebuilt in the 1970s. It was acknowledged that if it was significantly rebuilt in the 1970s it reflects and incorporates many of the nineteenth century elements. Again if the front façade of the building was completely rebuilt (no evidence provided) that also reflects the design of the original building that was there. The groups understanding was that most of the original was retained and didn't accept that there was a total rebuild. Jon Cane reported that the work for this section of the NP had been done from maps, he has not had access to any of the buildings to verify the map evidence.

The NP Group agreed to all the updates and proposed changes in response to the consultation comments. There were no objections from members of the public who were present.

A member of the public pointed out that the additional view was in the wrong place – and it was moved to the relevant place, and the aspect of another couple of viewpoints were adjusted.

2. **Minutes of the last meeting (25/11/21)** Minutes of the last meeting were approved. Agreed that, although not a requirement, it would be sensible when East Cambs does its 6 week consultation to hold a drop-in event to enable residents to view the Plan, recap on what the major changes are, identify how they can comment and find out about the remaining stages of the process.

If you have any enquiries regarding these minutes please contact Catherine Gibson, Chair of the Project Group, on 07976 268947 or email [catherinegibson@greenclose.co.uk](mailto:catherinegibson@greenclose.co.uk)

---

## Diary Dates

---

August 2022	Event	Location	Time
Tuesday 2	Recycling Day (Blue)		
Sunday 7	Holy Communion	St Etheldreda's	8.30am
Tuesday 9	Recycling Day (Green)		
Tuesday 16	Recycling Day (Blue)		
Tuesday 23	Recycling Day (Green)		
Wednesday 31	Recycling Day (Blue)		

September 2022	Event	Location	Time
Fridays 2, 9, 16, 23, 30	Reach Cafe	Village Hall	3pm to 4.30pm
Tuesday 6	Recycling Day (Green)		
Sunday 4	Holy Communion	St Etheldreda's	8.30am
Tuesday 1	Parish Council Meeting	Village Hall	7.00pm
Tuesday 13	Recycling Day (Blue)		
Tuesday 20	Recycling Day (Green)		
Tuesday 27	Recycling Day (Blue)		



## Bus Timetable

Reach is served by the Stagecoach number 11 bus service - summary of all buses serving Reach is shown below.

Please note that there is no bus service at all on Sundays

Cambridge to Bury - Monday to Friday (excluding Bank Holidays)				
Cambridge Drummer Street	Reach	Burwell Ness Road	Newmarket Bus Station	Bury Bus Station
06:50	07:28	07:36	08:08*	08:49
07:50	08:28	08:36	09:08*	09:49
09:50	10:28	10:36	11:08*	11:49
11:50	12:28	12:36	13:08*	13:49
13:50	14:28	14:36	15:24*	15:49
15:50	16:28	16:36	17:30	17:55
18:15	18:53	19:06		
19:15	19:53	20:06		

Cambridge to Bury - Saturdays (excluding Bank Holidays)				
Cambridge Drummer Street	Reach	Burwell Ness Road	Newmarket Bus Station	Bury Bus Station
06:50	07:28	07:36	08:08*	08:49
07:50	08:28	08:36	09:08*	09:49
09:50	10:28	10:36	11:08*	11:49
11:50	12:28	12:36	13:08*	13:49
13:50	14:28	14:36	15:08*	15:49
15:50	16:28	16:36	17:08	17:55
18:15	18:53	19:01		
19:15	19:53	20:03		

Bury to Cambridge - Monday to Friday (excluding Bank Holidays)				
Bury Bus Station	Newmarket Bus Station	Burwell Ness Road	Reach	Cambridge Drummer Street
		06:19	06:33	07:12
		06:39	06:53	07:32
	08:40	09:06	09:20	09:59
10:05	10:35*	11:06	11:20	11:59
12:05	12:35*	13:06	13:20	13:59
14:05	14:35*	15:06	15:20	14:59
15:05	15:35*	16:06	16:20	15:59
16:05	16:35*	17:06	17:20	16:59
17:05	17:35*	18:06	18:20	17:59

Bury to Cambridge - Saturdays (excluding Bank Holidays)				
Bury Bus Station	Newmarket Bus Station	Burwell Ness Road	Reach	Cambridge Drummer Street
		06:19	06:33	07:12
		06:49	07:03	07:42
	08:40	09:06	09:20	09:59
10:05	10:40*	11:06	11:20	11:59
12:05	12:40*	13:06	13:20	13:59
14:05	14:40*	15:06	15:20	15:59
15:05	15:40*	16:06	16:20	16:59
16:05	16:40*	17:06	17:20	17:59
17:05	17:40*	18:06	18:20	18:59

\* These are departure times - buses will arrive approximately 5 minutes earlier  
A full timetable can be downloaded from [www.reach-village.co.uk/bus\\_service.html](http://www.reach-village.co.uk/bus_service.html)

---

## Then and Now (see opposite page for pictures)

---

In some way associated with the fair weekend the church at the time conducted a procession which visited both the Hythe and the allotments of Fullers Farm off Great Lane, and where at each a blessing took place. This looks like an early evening event judging by the long shadows and consisted of church and mayoral dignitaries.

The taller of the two men leading the procession is Mr Sargeant who ran the village shop in Reach and the other is my grandfather, Colin Washtell.

In front of the Bishop is John Macdonald, who lived in Swaffham Prior.

**Chris Patterson**

---

## Contact Information

---

<b>Parish Council – see “Know Your Parish Council”</b>			
<b>Village Hall</b>			
	Chair	David Thomas	01638 742676
	Finance	Andrew Trump	01638 743335
	Bookings	Tash Bridgeman	07920 516586 rvhcb25@gmail.com
	Secretary	Sue Elliot	01638 742268
	<b>Marquee Bookings</b>	Andrew Hall	01638 743737
<b>Church</b>			
	Vicar	Eleanor Williams	01638 741262
	Curate (Duty days Wed, Fri and Sun)	Reverend Paula Spalding	07545 868549
	Priest in Retirement	Reverend David King	01638 742924
	Churchwarden	Dr Stephen Martin	01638 611235
<b>Emergencies</b>			
	Electricity (Eastern Electric)		0800 783 8838
	Police (Emergency)		999
	Police (Non-Emergency)		101
	Water (Anglian Water)		08457 145145
<b>Doctors, Burwell</b>			
	Contact Phone Numbers		01638 741234, out of hours dial 111
	Surgery Hours		Mon to Friday, 8.30am to 6.00pm
	Website		<a href="https://www.theburwellsurgery.co.uk/index.aspx">https://www.theburwellsurgery.co.uk/index.aspx</a>